

India counterfeit (2000)

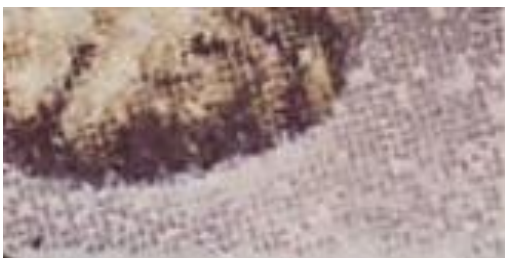
Leopard cat issue



Genuine



Counterfeit



Genuine



Forgery

The genuine stamp is printed in photolithography and perforated 13 while the lithographic counterfeit is perforated 11 and printed in offset (notice the small printing color dots). The genuine stamp has a watermark.

Commission de la lutte contre les faux et falsifiés de la FIP

© R. Gratton 2015